



Newport

REGAL HOMES

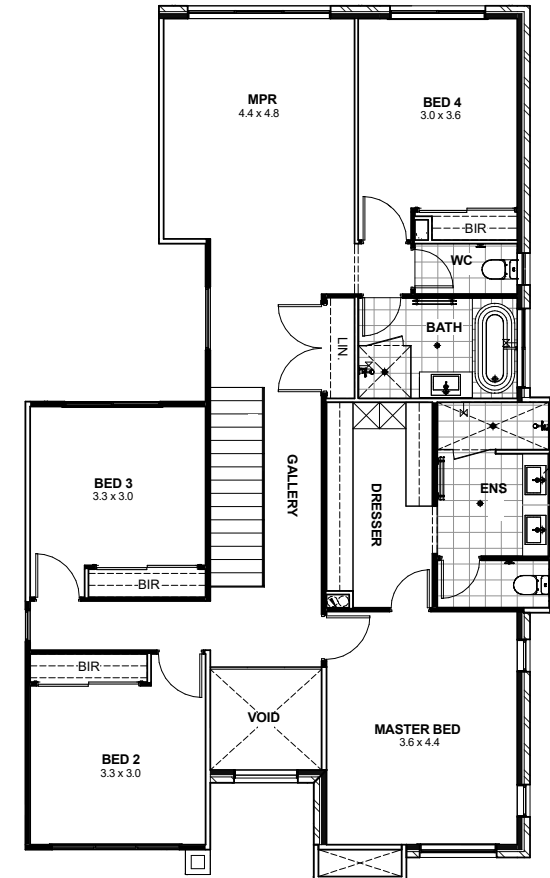
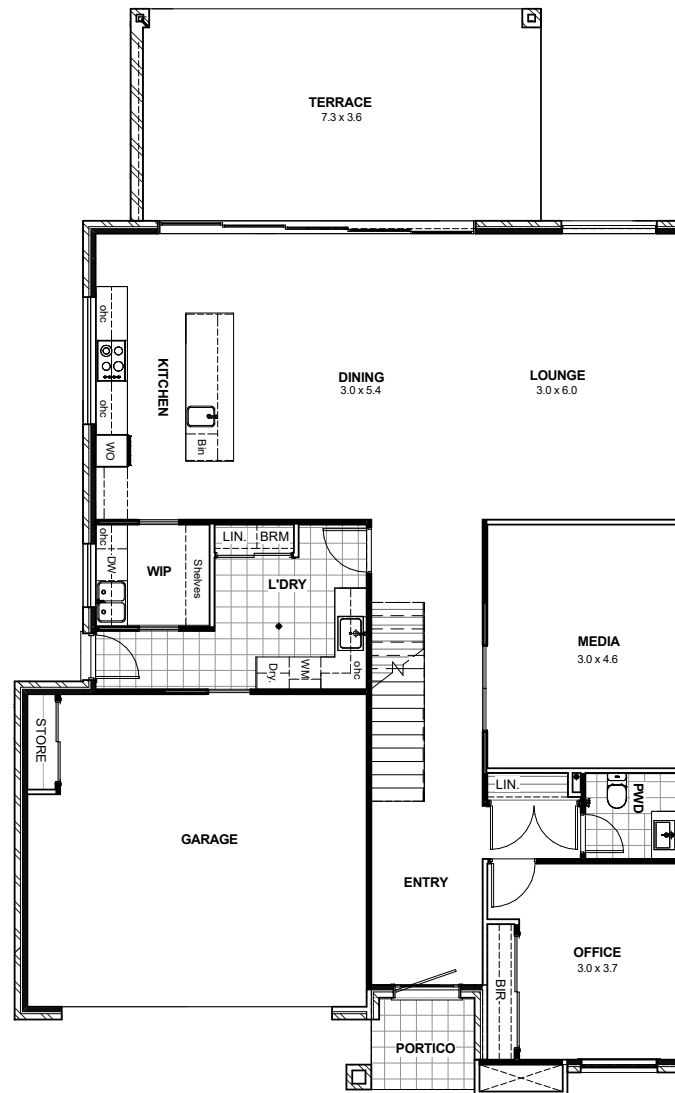


Newport

4 2 2

GF - Living	142.97m ²
FF - Living	130.10m ²
Garage	41.18m ²
Terrace	30.96m ²
Porch	3.72m ²
Total Area	348.93m²

Total Width 12.76m
Total Length 20.52m



regalhomes.com.au
0448 801 766
02 6239 2360
contact@regalhomes.com.au

Disclaimer: Sizes may vary slightly as per facade range. This work is exclusively owned by Regal Homes (Aust) Pty Ltd and cannot be reproduced or copied either wholly or in part, in any form (graphic, electronic or mechanical, including photocopying and uploading to the internet) without the permission of Regal Homes (Aust) Pty Ltd. This document is for illustration purposes only and can be subject to change without notice.

REGAL HOMES