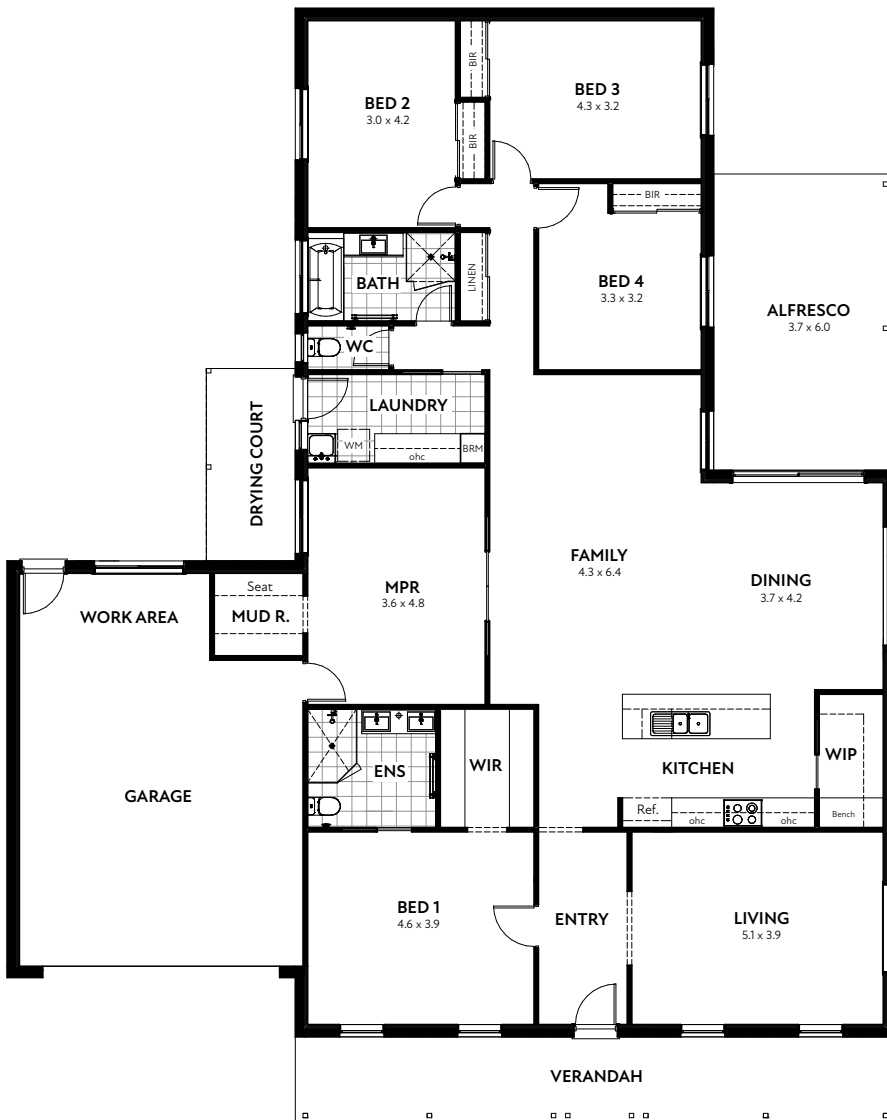


# Paterson



 4
  2
  2

## Areas

Living	221.21m <sup>2</sup>
Garage	47.16m <sup>2</sup>
Alfresco	22.14m <sup>2</sup>
Verandah	21.91m <sup>2</sup>
Drying Court	7.00m <sup>2</sup>
<b>Total Area</b>	<b>319.42m<sup>2</sup></b>

Total Width	18.01m
Total Length	22.64m

 [regalhomes.com.au](https://regalhomes.com.au)  
 **0448 801 766**  
 **02 6239 2360**  
 [contact@regalhomes.com.au](mailto:contact@regalhomes.com.au)

Disclaimer: Sizes may vary slightly as per facade range. This work is exclusively owned by Regal Homes (Aust) Pty Ltd and cannot be reproduced or copied either wholly or in part, in any form (graphic, electronic or mechanical, including photocopying and uploading to the internet) without the permission of Regal Homes (Aust) Pty Ltd. This document is for illustration purposes only and can be subject to change without notice.

**REGAL** HOMES