



**Berkeley**

**REGAL HOMES**



# Berkeley


4 2 2

|             |                      |
|-------------|----------------------|
| Alfresco    | 20.26m <sup>2</sup>  |
| Balcony     | 9.24m <sup>2</sup>   |
| FF - Living | 115.16m <sup>2</sup> |
| Garage      | 44.82m <sup>2</sup>  |
| GF - Living | 198.99m <sup>2</sup> |
| Porch       | 2.77m <sup>2</sup>   |
| Total Area  | 391.24m <sup>2</sup> |

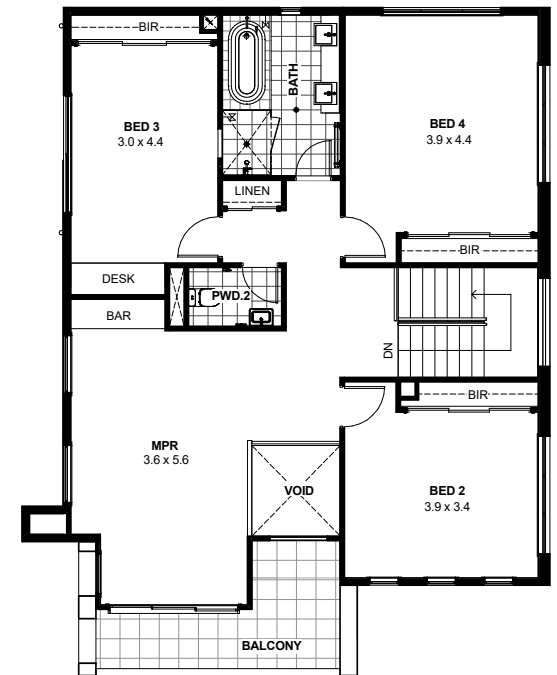
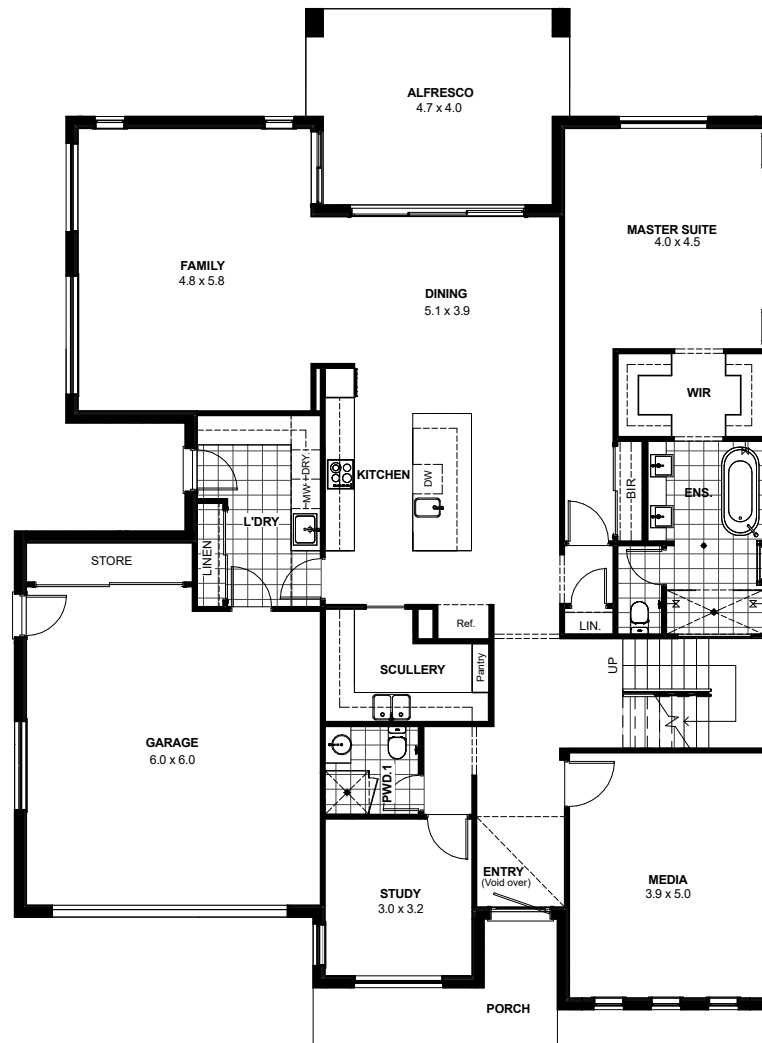
|              |        |
|--------------|--------|
| Total Width  | 15.50m |
| Total Length | 20.42m |

 [regalhomes.com.au](http://regalhomes.com.au)

 0448 801 766

 02 6239 2360

 [contact@regalhomes.com.au](mailto:contact@regalhomes.com.au)



Disclaimer: Sizes may vary slightly as per facade range. This work is exclusively owned by Regal Homes (Aust) Pty Ltd and cannot be reproduced or copied either wholly or in part, in any form (graphic, electronic or mechanical, including photocopying and uploading to the internet) without the permission of Regal Homes (Aust) Pty Ltd. This document is for illustration purposes only and can be subject to change without notice.

**REGAL** HOMES