



Adina

REGAL HOMES



Adina

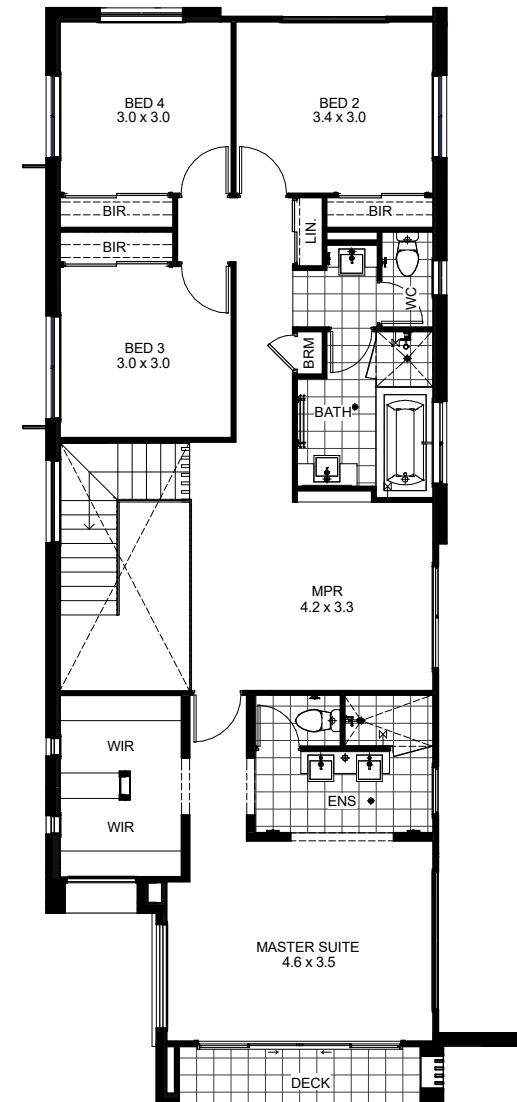
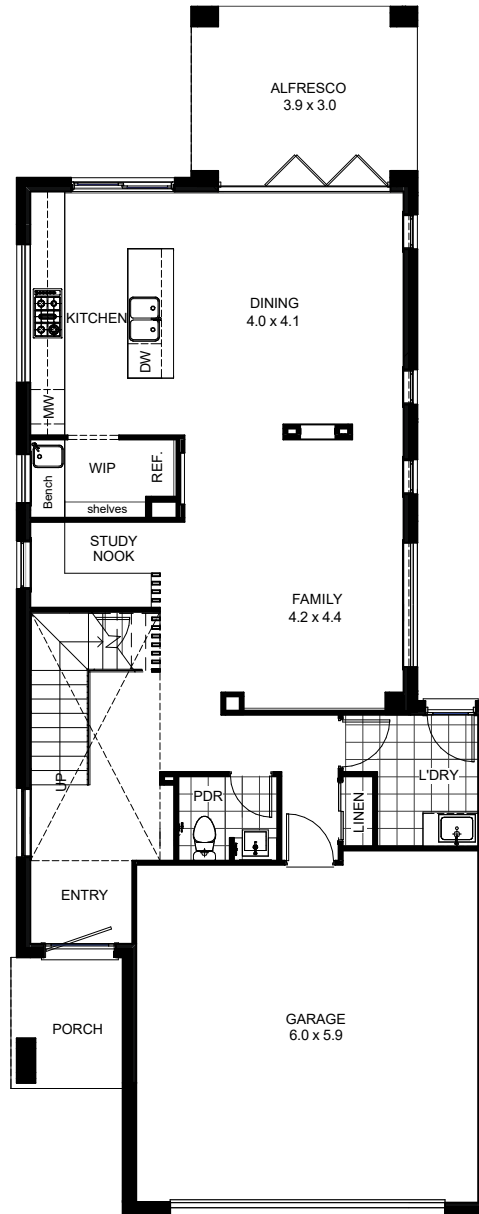
4
 2
 2



Alfresco	11.85m ²
Deck	4.85m ²
FF - Living	119.54m ²
Garage	39.87m ²
GF - Living	90.36m ²
Porch	4.07m ²
Total Area	279.69m ²

Total Width	8.30m
Total Length	21.13m

- regalhomes.com.au
- 0448 801 766**
- 02 6239 2360**
- contact@regalhomes.com.au



Disclaimer: Sizes may vary slightly as per facade range. This work is exclusively owned by Regal Homes (Aust) Pty Ltd and cannot be reproduced or copied either wholly or in part, in any form (graphic, electronic or mechanical, including photocopying and uploading to the internet) without the permission of Regal Homes (Aust) Pty Ltd. This document is for illustration purposes only and can be subject to change without notice.

REGAL HOMES